



CE Marking

Information guide



CE marking

Liniar is pleased to announce its customer support documentation for achieving CE

The Standard

BS EN 14351-1:2006+A1:2010 Windows and Doors.

Product standard and performance characteristics. Windows and external pedestrian doorsets without resistance to fire and/or smoke leakage characteristics.

The Background

- CE Marking becomes a legal requirement on 1st July 2013 for construction products supplied within the EU and the UK, including windows and external doorsets.
- By affixing the CE label, a manufacturer is declaring conformity with all legal requirements applicable to its products.
- CE Marking is a self certification scheme and requires minimal involvement with independent third parties. This pack will help you through the process of self-declaration.

Responsibility

It is the responsibility of the organisation supplying the complete product to market to provide the CE certification. This means frame and glazed unit. If your company is supplying frame only, the responsibility to comply and provide a CE mark falls to the installer or organisation adding the glazed unit to the frame.

For installers buying in glass from a source other than the frame manufacturer please see folder 'Installers' on the enclosed Liniar CE Marking CD for further information.

Information supplied courtesy of CEN Solutions.

Failure to comply may result in prosecution, fines and possible custodial sentences.

Mandatory Requirements

The following does not include doors fitted with emergency exit or panic devices, where additional requirements are mandatory.

The mandatory requirements within BS EN14351-1 are:

- Clause 4.6 - Dangerous substances.
- Clause 4.12 - Thermal transmittance.
- Clause 4.8 - Load Bearing Capacity of Safety Devices.
- Clause 7.3 - Factory Production Control.

1 - Dangerous Substances:

Liniar have prepared a 'Dangerous Substances' letter, see enclosed Liniar CE Marking CD.

Please contact your glazed unit and hardware suppliers for a similar statement.

2 - Thermal Transmittance:

Liniar's frame thermal values have been loaded onto 'The Oracle', a U Value calculator available through Build Check Publications Ltd.

To subscribe, go to www.buildcheckpublications.co.uk/ and follow the link for 'subscribe to The Oracle'. The cost for 1 year's unlimited use is £199 +VAT, not only will you have access to thermal values for all Liniar products, but additional templates and information to help with your declaration. Build Check 01494 452713.

Under the CE Marking scheme, only U Values are acceptable in showing compliance, window (WER) and door energy ratings (DER) are not suitable. Current UK Building Regulations 2010 state a requirement of 1.6W/m².K for replacement domestic windows and 1.8W/m².K for replacement domestic doors. Values for new build domestic and commercial installations are the same or greater, although the 2013 revision to Part L is due for release shortly. Liniar will advise of any changes to the regulations in due course. Liniar recommends generating U Value reports from 'The Oracle' no greater than those stated above. These reports will need to be verified by a UKAS accredited Notified body. The cost for each report verified should be approx £100 +VAT. (verification is not required by companies of less than 10 employees and £2m Euros p.a.)

Example

For example the following could become the 'worst case' frame and IGU combination supplied:

A Liniar window with standard frames, 4mm float outer, 4mm Pilkings K inner, 20mm Argon filled cavity and Swiss Spacer V will achieve a U Value of 1.6W/m².K.

A Liniar resi-door with large outer frame, glazed/mid-rail/glazed, style 2, 4mm float, 4mm Pilkings K inner, 20mm air filled and aluminium spacer will achieve a U Value of 1.8W/m².K.

The example U Values will appear on The Declaration of Performance and only products with the same value or better can be supplied under your company's CE Mark.

3 – Load Bearing Capacity of Safety Devices:

Both Liniar side and top hung windows have been tested with a variety of safety devices, see 'Safety Device Test Data Index' to identify a suitable product for your ongoing use. The index sheets will point towards test data contained on the enclosed Liniar CE Marking CD.

4 – Factory Production Control:

If there is no ISO or similar quality procedure in place, a suitable Factory Production Control system should be written. Go to the download area of www.buildcheckpublications.co.uk & select 38 FPC Template EN 14351-1 (CE Marking) Windows and Doors. Populate the template with the relevant company information.

If you would prefer to create your own FPC, the following key areas need to be established, recorded and maintained to ensure compliance:

- 7.3.1 General
- 7.3.2 Personnel
- 7.3.3 Equipment
- 7.3.4 Raw materials and components
- 7.3.5 Production process
- 7.3.6 Product testing and evaluation
- 7.3.7 Traceability and marking
- 7.3.8 Non-conforming products
- 7.3.9 Corrective action

Alternatively, if you would like a Factory Production Control writing for your company, contact your local consultant/auditor. Depending on your company, the cost should be from £600 +VAT. CEN Solutions 01785 716625 other consultants may be available.

Declaration of Performance

Once these four categories have been completed, a Declaration of Performance should be prepared and placed in the public domain, a website for instance, or attached to a delivery note. An example of a window and door Declaration of Performance can be found on the enclosed Liniar CE Marking CD.

Labelling

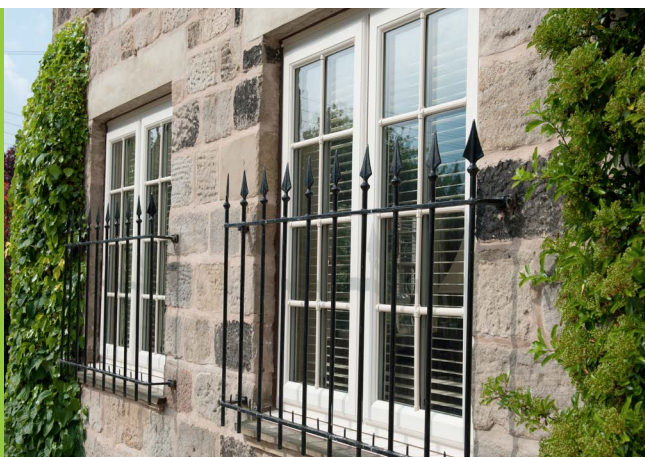
The final operation is to permanently attach the label to the complete product. Liniar recommends the label should be affixed in an area visible when the window or door is opened. An example of both window and door CE labels can be found on the enclosed Liniar CE Marking CD.

Emergency Exit Devices

For those companies fitting emergency exit or panic devices, the following applies:

- As 1 to 4 with the following additions:
- Regular audits will be required by a Notified Body with the relevant accreditation, to demonstrate compliance with procedures. Build-Check Ltd, BBA, BSI, BM Trada.
- The CE Mark label and Declaration of Performance will be prepared for you by the Notified Body which carries out the audit.
- Test data is required to demonstrate 'ability to release' for the hardware device supplied. Written consent for the use of relevant test data will be required from the hardware supplier.

This CE Marking document and supporting information is intended for guidance only and is given in good faith. All information supplied within this pack, is Liniar's interpretation of the referenced standards. Liniar does not accept any liability resulting from the use of this information.



7 great reasons to choose Liniar

Innovative – the only entirely new PVCu window and door profile system to be developed in the last 10 years

Energy efficient – designed from scratch to achieve the pinnacle of thermal performance and retain more heat in your property

Safe and secure – engineered with built-in security features and approved by independent testing facilities

British made – manufactured in our state-of-the-art factory in the heart of Derbyshire

Lead free – all Liniar profiles are extruded using materials that are 100% lead free

Quality assured – backed with ISO 9001 accreditation for your peace of mind

Guaranteed – all Liniar frames are guaranteed to not warp, split or discolour for a minimum of 10 years



Liniar

Flamstead House
Denby Hall Business Park
Denby
Derbyshire DE5 8JX

Tel: +44 (0)1332 883900
Fax: +44 (0)1332 883901
Email: sales@liniar.co.uk
www.liniar.co.uk

