





SwitchBoard

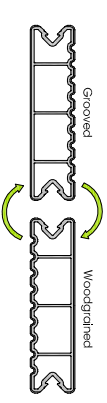
Fitting Instructions - Method 1

If using LDE004, LDE030 or LDE034 Trims, follow this method.

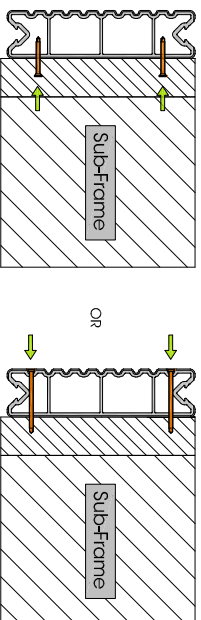
Parts List:

 QuickClip LDM047	 Starter Clip LDH036	 SwitchBoard LDE033	 Trims LDE030 Material: PVCu LDE004 Material: PVCu LDE034 Material: Aluminium
---	--	---	---

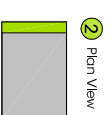
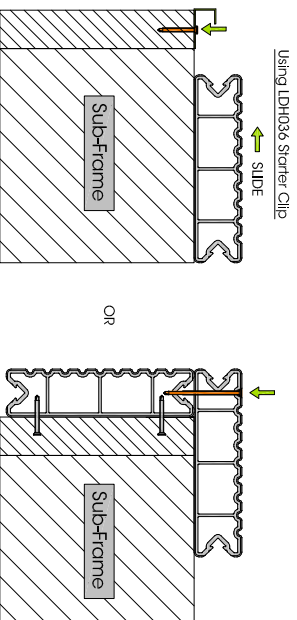
SwitchBoard's innovative design means it can be installed with either side facing up.



1 Install the skirting onto sub-frame where required.

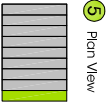
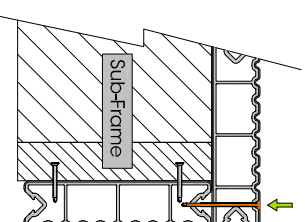


2 Fix down the first board in position at 600mm (max) centres along the length of the board. See fixing methods below.



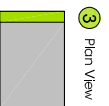
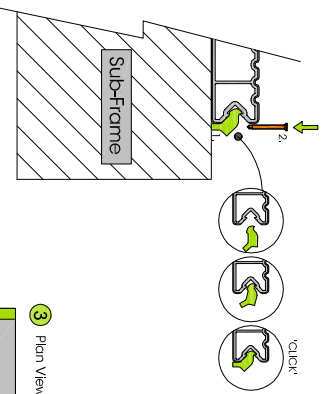
If installing SwitchBoard with an overhang (max 25mm), it may be necessary to screw at an angle into the sub-frame. The screw head must be within 30mm of the deck board edge to ensure trim coverage.

5 Fix down final board in position at 600mm (max) centres along the length of the board. See fixing methods below.

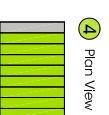
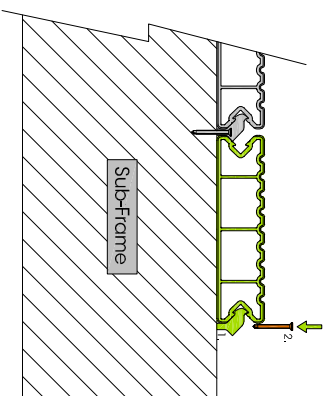


If installing SwitchBoard with an overhang (max 25mm), it may be necessary to screw at an angle into the sub-frame. The screw head must be within 30mm of the deck board edge to ensure trim coverage.

3 Insert QuickClips at 600mm (max) centres along the length of the board and screw in place.



4 Butt the next board up to the clips and secure this board as shown in step 3. Repeat for all remaining boards.



6 Install trims around the exposed edges of the deck. First cut trims to length with mitred corners where required then fix into position using an appropriate fixing method. See parts list for available trims.

Trims can be secured in place using an appropriate adhesive or mechanical fixing method. Where necessary some PVCu trims may require the underside leg to be snapped off.

